

PRODUCTS

FCT offers the following products for a wide range of applications.

Split body, top entry and fully welded design trunnion mounted ball valves from 2" to 60", pressure class 150# to 2500#, API 3 000 to API 20 000 (up to 100 tons).

Compact valves, tandem valves, pig launcher/receiver valves...

Valves for special applications, such as:

- Cryogenic & High temperature (-101° up to +400°) + High pressure (API6A up to 20 " API 15 000)
- Subsea (shallow water) + HIPPS (Quick closing, metal & soft) + DBB
- DIB (up to 38" 1500 & 14" 2500 metal seated) + Corrosive fluid (High level of H₂S)
- Slurry + Oxygen Service + Riser valves + 3 ways + 4 ways

Product range



TOP ENTRY



SPLIT BODY - SIDE ENTRY



TANDEM DBB



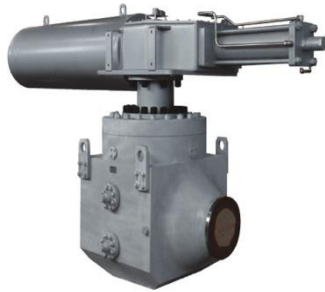
FULLY WELDED



DIB VALVE



SUBSEA VALVE



API 6A VALVE



HIPPS VALVE



PIG LAUNCHER / RECEIVER VALVE



LOW TEMPERATURE VALVE



HIGH TEMPERATURE VALVE



COMPACT VALVE



3 & 4 WAYS VALVE

TOP ENTRY VALVE



Specifications

Size / Pressure range / Temperature

- DN 50 – DN1500
- ASME Class 150 – 2500
- API 6A API 3000 – API 20000
- -101°C (depending on applicable international standard & Specification) / +400°C

Main Characteristics

- Trunnion Mounted
- Flanges RF, RTJ, WE, Hub (clamp), Compact flanges
- Double block and bleed capability
- SIL 3 Compliant

Body / Trim Material

- Forged or Cast

From carbon steel up to most exotic material such as SS, DX, SDX 6MO, Alloy 625, Monel, Titanium, ...

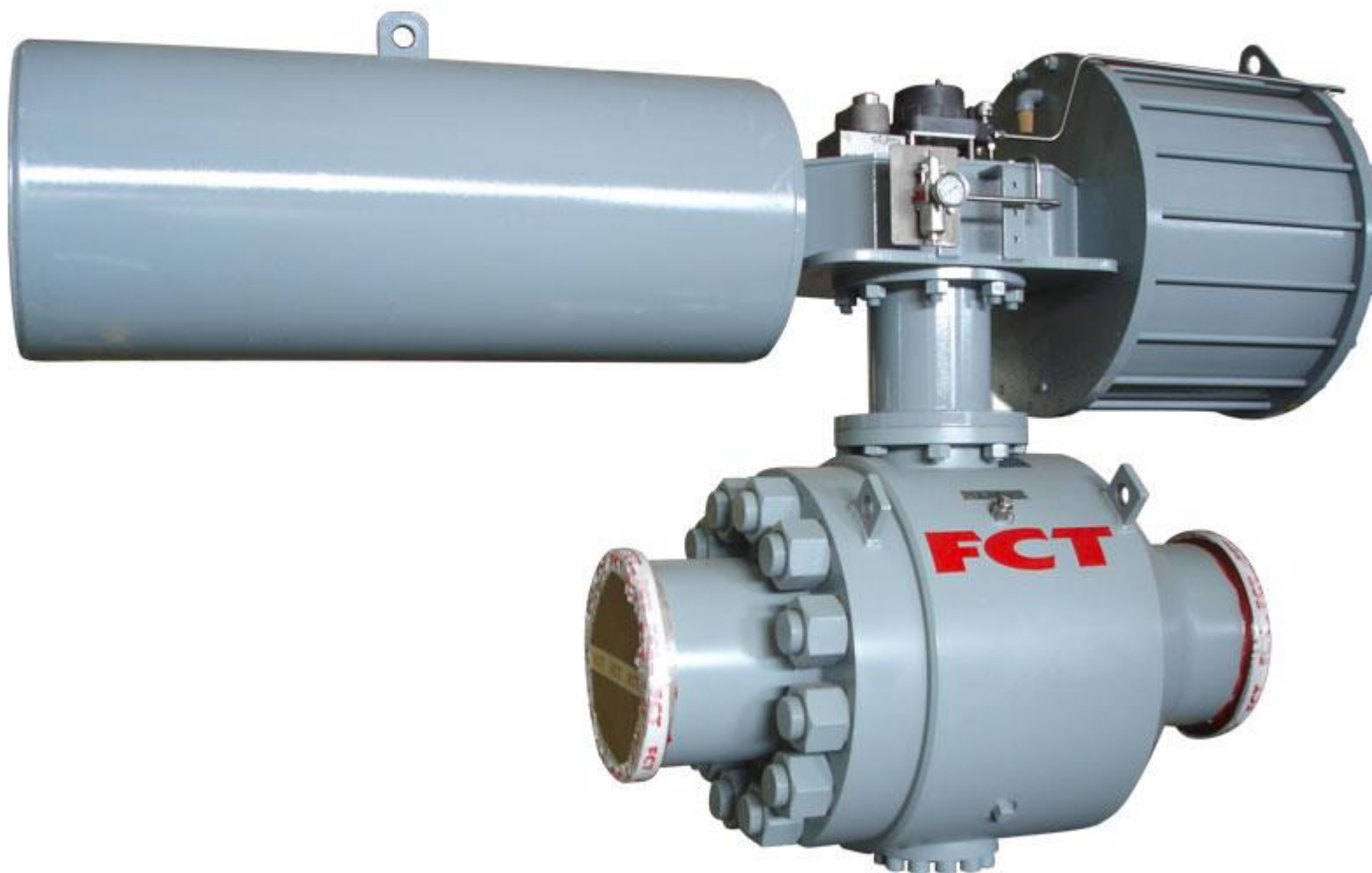
Seats

- Soft seated & Metal seated (Tungsten Carbide from 150µm to 400µm)
- SPE (Self relieving) & DPE& DPE

Additional data

- Thanks to the very strong design, Top entry products are generally used for severe services such as Riser, High pressure (API6A) or HIPPS and great behavior in front of pipe loading.
The main advantage of this design is inline maintenance, no need to dismantle the valve from the line.

SPLIT BODY / SIDE ENTRY VALVE



Specifications

Size / Pressure range / Temperature

- DN 50 – DN1500
- ASME Class 150 – 2500
- API 6A API 3000 – API 15000
- -101°C (depending on applicable international standard & Specification) / +400°C

Main Characteristics

- Trunnion Mounted
- 2 or 3 pieces
- Flanges RF, RTJ, WE, Hub (clamp), Compact flanges
- Double block and bleed capability
- SIL 3 Compliant

Body / Trim Material

- Forged or Cast
- From carbon steel up to most exotic material such as SS, DX, SDX 6MO, Alloy 625, Monel, Titanium, ...

Seats

- Soft seated & Metal seated (Tungsten Carbide from 150µm to 400µm)
- SPE (Self relieving) & DPE

Additional data

- Product used in a wide range of application from upstream to downstream sector in Oil & Gas, petrochemical and process.

TANDEM DBB VALVE



Specifications

Size / Pressure range / Temperature

- DN 50 – DN1500
- ASME Class 150 – 2500
- API 6A API 3000 – API 15000
- -46°C / +200°C

Main Characteristics

- Trunnion Mounted
- Flanges RF, RTJ, WE, Hub (clamp), Compact flanges
- Double Isolation & Bleed as per API 6D (type A) new requirement H12.
- SIL 3 Compliant

Body / Trim Material

- Forged or Cast
- From carbon steel up to most exotic material such as SS, DX, SDX 6MO, Alloy 625, Monel, Titanium, ...

Seats

- Soft seated & Metal seated (Tungsten Carbide from 150µm to 400µm)
- SPE (Self relieving) & DPE

Additional data

- Customized Two balls & four seats in one body to ensure a perfect isolation from a single or two pressure sources in a compact solution.

FULLY WELDED VALVE



Specifications

Size / Pressure range / Temperature

- DN50 – DN1500
- ASME Class 150 – 2500
- -46°C / +200°C

Main Characteristics

- Trunnion Mounted
- Flanges RF, RTJ, WE, Hub (clamp), Compact flanges
- Double block and bleed capability

Body / Trim Material

- Forged or Cast
- From carbon steel up to most exotic material such as SS, DX, SDX 6MO, Alloy 625, Monel, Titanium, ...

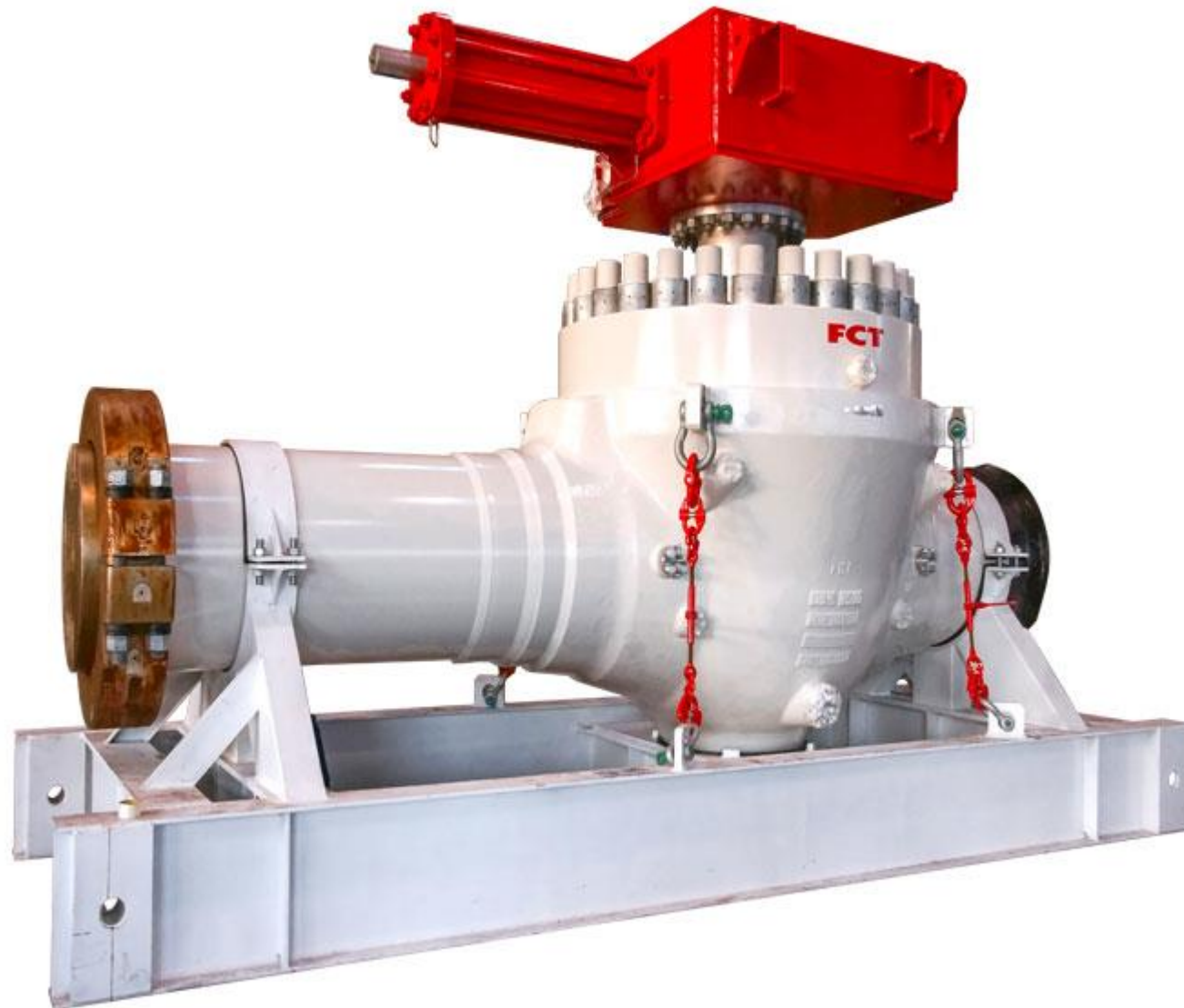
Seats

- Soft seated & Metal seated (Tungsten Carbide from 150µm to 400µm)
- SPE (Self relieving) & DPE

Additional data

- Product mainly used for pipeline application such as gas transportation and distribution.

DIB VALVE



Specifications

Size / Pressure range / Temperature

- DN 50 – DN1500
- ASME Class 150 – 2500
- -46°C / +200°C

Main Characteristics

- Trunnion Mounted
- Split Body/Side Entry or Top Entry
- Flanges RF, RTJ, WE, Hub (clamp), Compact flanges
- Double Isolation & Bleed as per API 6D (type B) new requirement H12.
- SIL 3 Compliant

Body / Trim Material

- Forged or Cast
- From carbon steel up to most exotic material such as SS, DX, SDX 6MO, Alloy 625, Monel, Titanium, ...

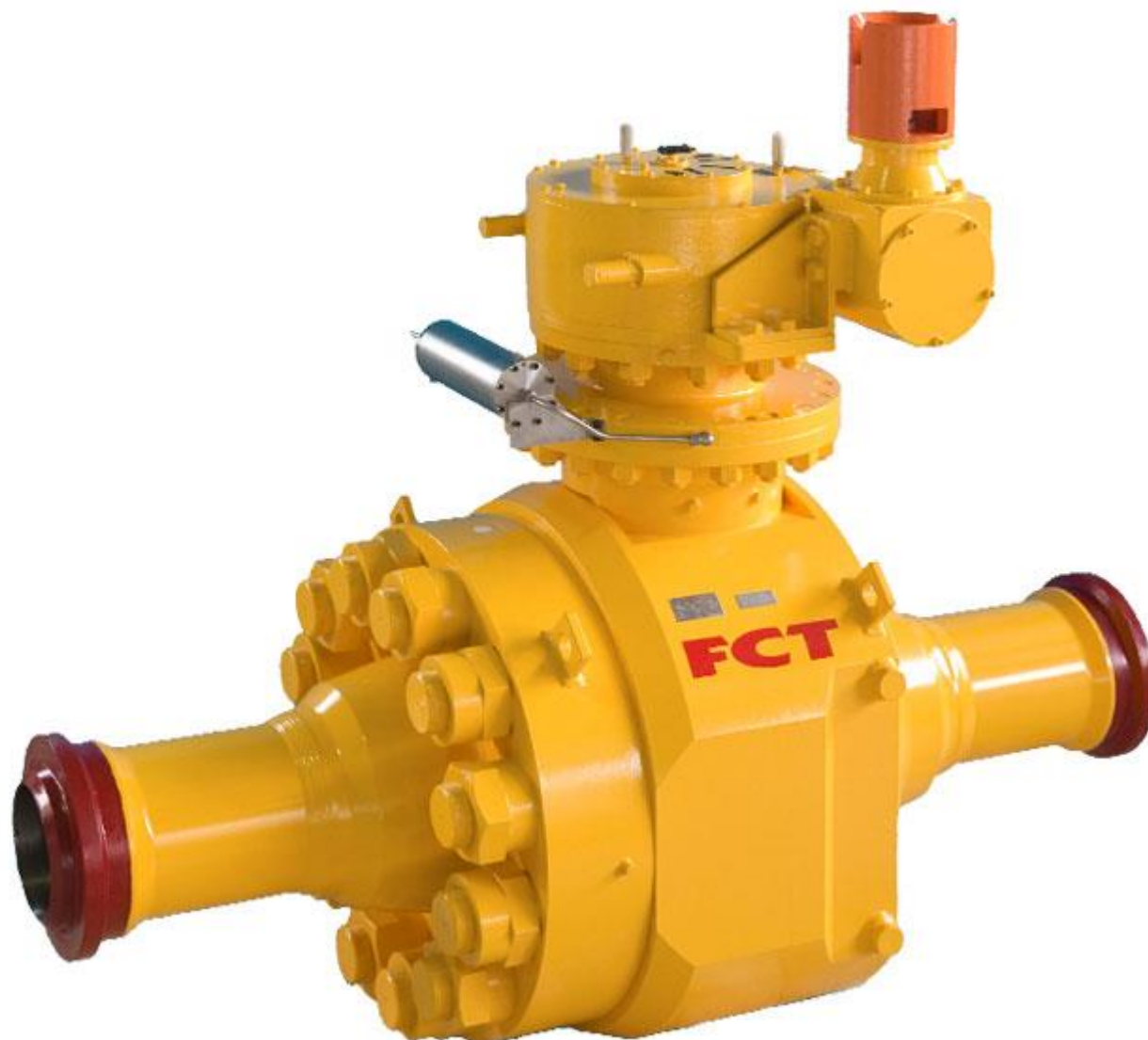
Seats

- Soft seated & Metal seated (Tungsten Carbide from 150µm to 400µm)
- SPE (Self relieving) & DPEE

Additional data

- Fully customized single valve for perfect isolation against a single pressure source (Double Isolation and Bleed) allowing 100% safe line opening. Typically used for pig launcher/receiver isolation. Range qualified by Equinor up to 38" 1500#.

SUBSEA VALVE



Specifications

Size / Pressure range / Temperature

- DN 50 – DN1500
- ASME Class 150 – 2500
- API 6A API 3000 – API 15000
- -46°C / +200°C

- Shallow Water

Main Characteristics

- Trunnion Mounted
- Split Body/Side Entry or Top Entry
- Flanges RF, RTJ, WE, Hub (clamp), Compact flanges
- Double block and bleed capability
- SIL 3 Compliant

Body / Trim Material

- Forged or Cast
- From carbon steel up to most exotic material such as SS, DX, SDX 6MO, Alloy 625, Monel, Titanium, ...

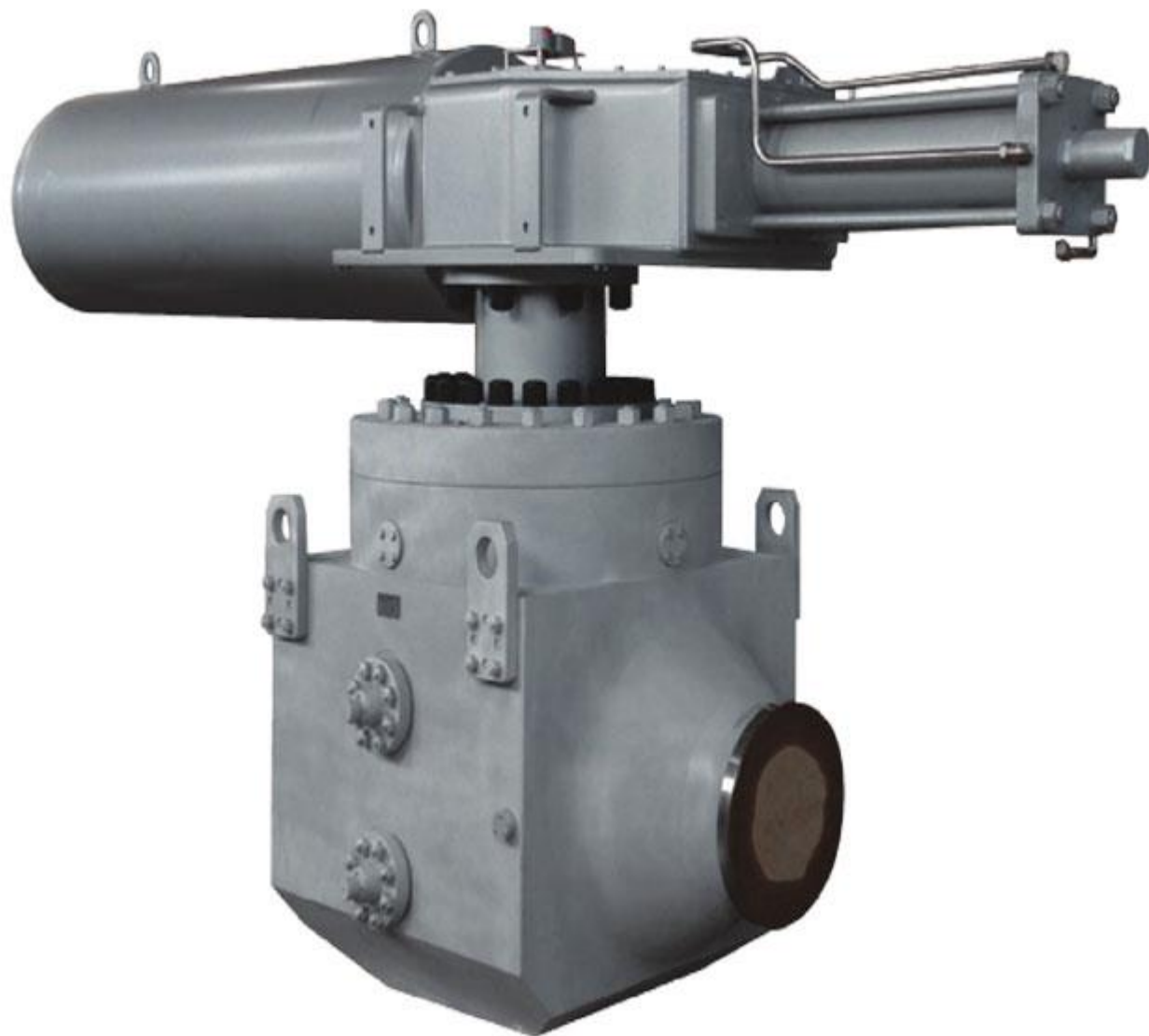
Seats

- Soft seated & Metal seated (Tungsten Carbide from 150µm to 400µm)
- SPE (Self relieving) & DPE

Additional data

- Reliable design to ensure a long life time and prevent extremely difficult and costly maintenance.

API6A VALVE



Specifications

Size / Pressure range / Temperature

- DN 50-DN500
- API 6A API 3000 – API 20000
- -101°C / +200°C

Main Characteristics

- Trunnion Mounted
- Split Body/Side Entry or Top Entry
- Flanges RTJ, WE, Hub (clamp), Compact flanges
- Double block and bleed capability
- SIL 3 Compliant

Body / Trim Material

- Forged or Cast
- From carbon steel up to most exotic material such as SS, DX, SDX 6MO, Alloy 625, Monel, Titanium, ...

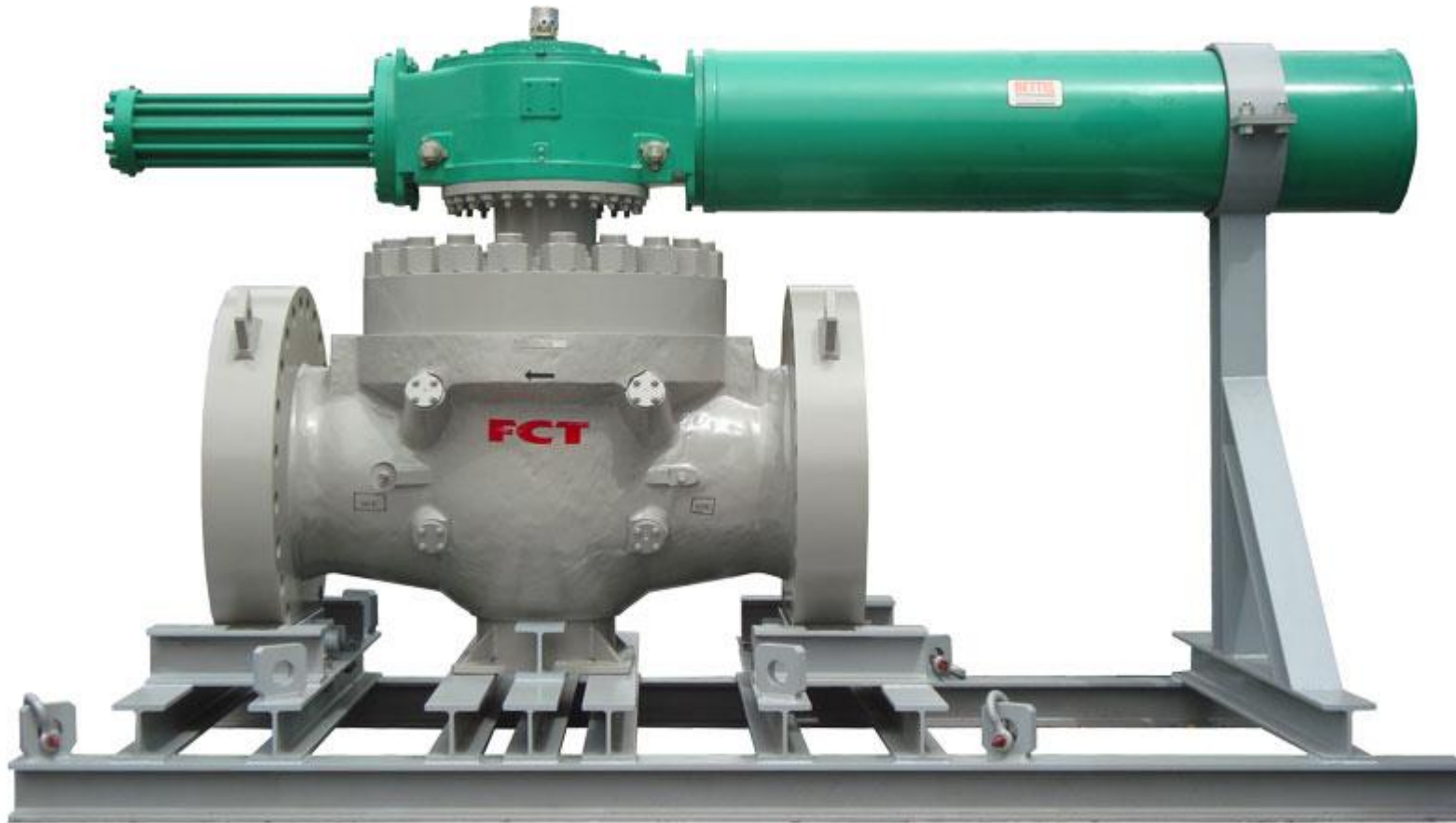
Seats

- Soft seated & Metal seated (Tungsten Carbide from 150µm to 400µm)
- SPE (Self relieving) & DPE

Additional data

- HP/HT fully customized design to work on the most extreme upstream applications.

HIPPS VALVE



Specifications

Size / Pressure range / Temperature

- DN 50 – DN1500
- ASME Class 150 – 2500
- API 6A API 3000 – API 20000
- -101°C / +400°C

Main Characteristics

- Trunnion Mounted
- Split Body/Side Entry or Top Entry
- Flanges RF, RTJ, WE, Hub (clamp), Compact flanges
- Double block and bleed capability
- SIL 3 Compliant

Body / Trim Material

- Forged or Cast
- From carbon steel up to most exotic material such as SS, DX, SDX 6MO, Alloy 625, Monel, Titanium, ...

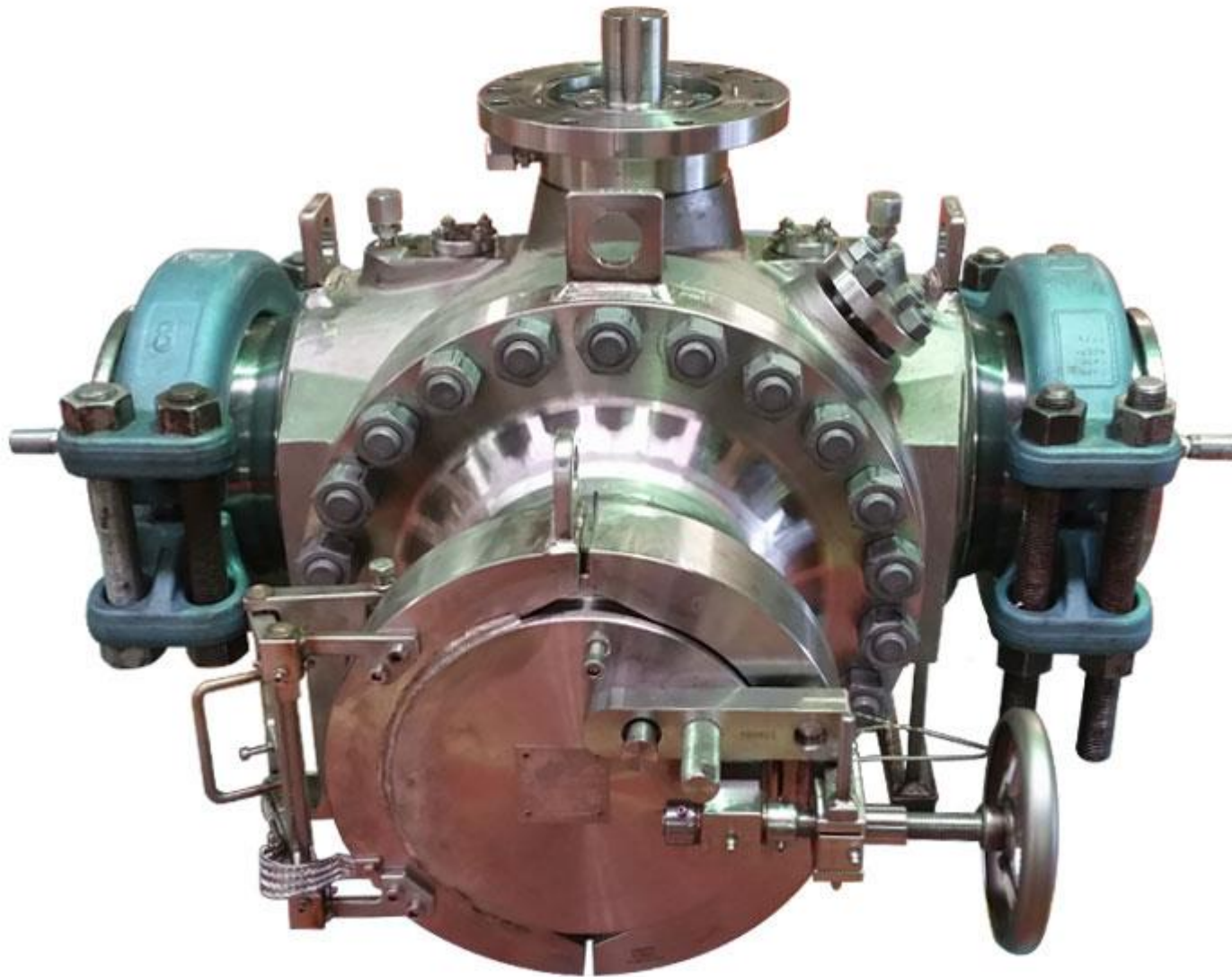
Seats

- Soft seated & Metal seated (Tungsten Carbide from 150µm to 400µm)
- SPE (Self relieving) & DPE

Additional data

- Valves for High Integrity Pressure Protection System, SIL 3 compliant. The last safety barrier protecting the downstream equipments by isolating from the upstream overpressure.

PIG LAUNCHER – RECEIVER VALVE



Specifications

Size / Pressure range / Temperature

- DN 50 – DN1500
- ASME Class 150 – 1500
- -46°C / +200°C

Main Characteristics

- Trunnion Mounted
- Flanges RF, RTJ, WE, Hub (clamp), Compact flanges
- Block & Bleed

Body / Trim Material

- Forged or Cast
- From carbon steel up to most exotic material such as SS, DX, SDX 6MO, Alloy 625, Monel, Titanium, ...

Seats

- Soft seated & Metal seated (Tungsten Carbide from 150µm to 400µm)

Additional data

- FCT Pig Launcher/Receiver compact solution, allowing a PIG length of 1,4 X the inside diameter of the pipe.
- Perfect compact and cheap solution (compare to conventional PIG Launcher/Receiver) dedicated to non dangerous application.

LOW TEMPERATURE VALVE



Specifications

Size / Pressure range / Temperature

- DN 50 – DN1500
- ASME Class 150 – 2500
- API 6A API 3000 – API 10000
- Down to -101°C (depending on applicable international standard & Specification)

Main Characteristics

- Trunnion Mounted
- Split Body/Side Entry or Top Entry
- Flanges RF, RTJ, WE, Hub (clamp), Compact flanges
- Double Block & Bleed capability
- SIL 3 Compliant

Body / Trim Material

- Forged or Cast
- From carbon steel up to most exotic material such as SS, DX, SDX 6MO, Alloy 625, Monel, Titanium, ...

Seats

- Soft seated & Metal seated (Tungsten Carbide from 150µm to 400µm)
- SPE (Self relieving) & DPE

HIGH TEMPERATURE VALVE



Specifications

Size / Pressure range / Temperature

- DN 50 – DN1500
- ASME Class 150 – 2500
- API 6A API 3000 – API 10000
- Up to+ 400°C

Main Characteristics

- Trunnion Mounted
- Split Body/Side Entry or Top Entry
- Flanges RF, RTJ, WE, Hub (clamp), Compact flanges
- Double Block & Bleed capability
- SIL 3 Compliant

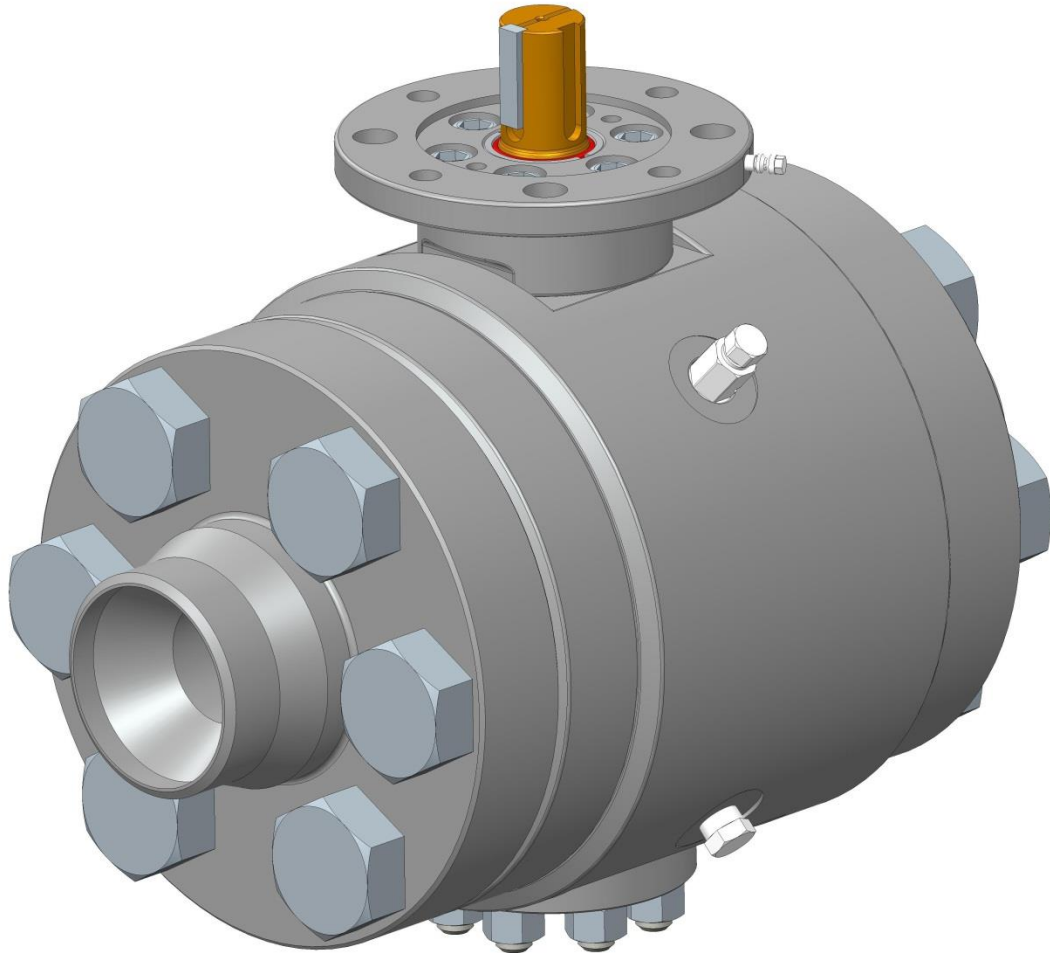
Body / Trim Material

- Forged or Cast
- From carbon steel up to most exotic material such as SS, DX, SDX 6MO, Alloy 625, Monel, Titanium, ...

Seats

- Metal seated
- SPE (Self relieving) & DPE

COMPACT VALVE



Specifications

Size / Pressure range / Temperature

- DN 50 – DN300
- Usually from 2" to 4"
- ASME Class 150 – 2500
- API 6A API 3000 – API 15000
- Usually pressure class 1500#, 2500# and API 10000
- -46°C / +200°C

Main Characteristics

- Trunnion Mounted
- Split Body/Side Entry
- WE Swivel
- Double block and bleed capability

Body / Trim Material

- Forged or Cast
- From carbon steel up to most exotic material such as SS, DX, SDX 6MO, Alloy 625, Monel, Titanium,...

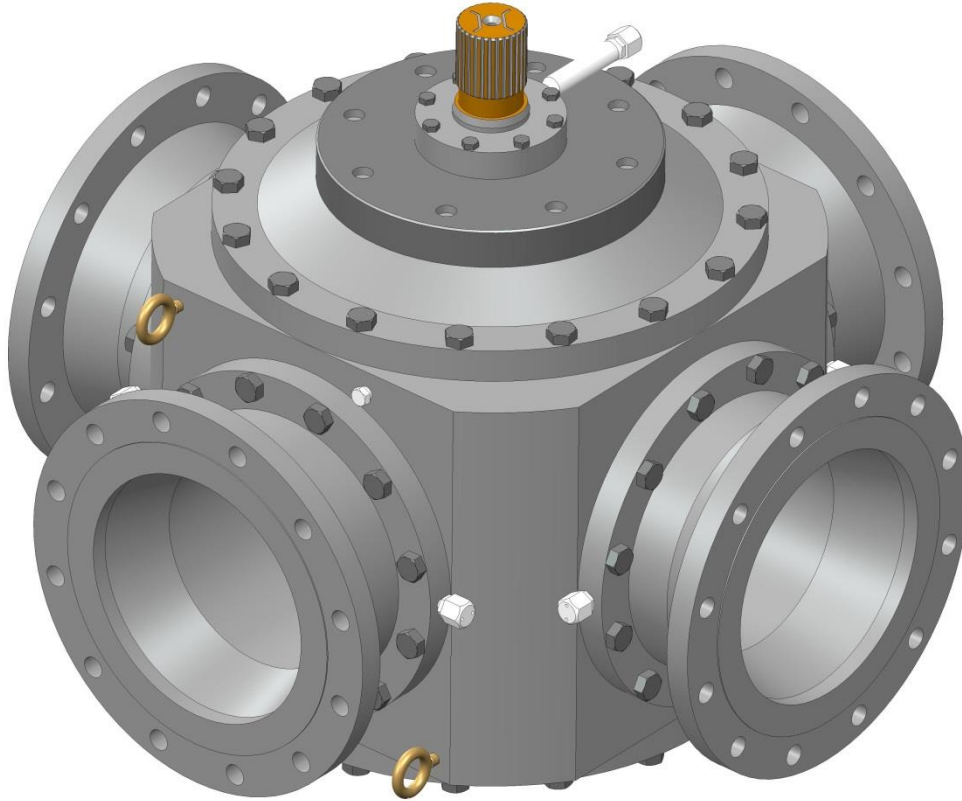
Seats

- Soft seated & Metal seated (Tungsten Carbide from 150µm to 400µm)
- SPE (Self relieving) & DPE

Additional data

- The smaller face to face dimension of the compact design is allowing customer to reduce drastically the size of their system layout or skid. The swivel flanges also allow a very easy installation and valve replacement.

3 & 4 WAYS VALVE



Specifications

Size / Pressure range / Temperature

- DN 50 – DN1500

- ASME Class 150 – 2500
- -46°C / +200°C

Main Characteristics

- Trunnion Mounted
- Split Body/Side Entry & Top Entry
- Flanges RF, RTJ, WE, Hub (clamp), Compact flanges

Body / Trim Material

- Forged or Cast
- From carbon steel up to most exotic material such as SS, DX, SDX 6MO, Alloy 625, Monel, Titanium,.....

Seats

- Soft seated & Metal seated (Tungsten Carbide from 150µm to 400µm)